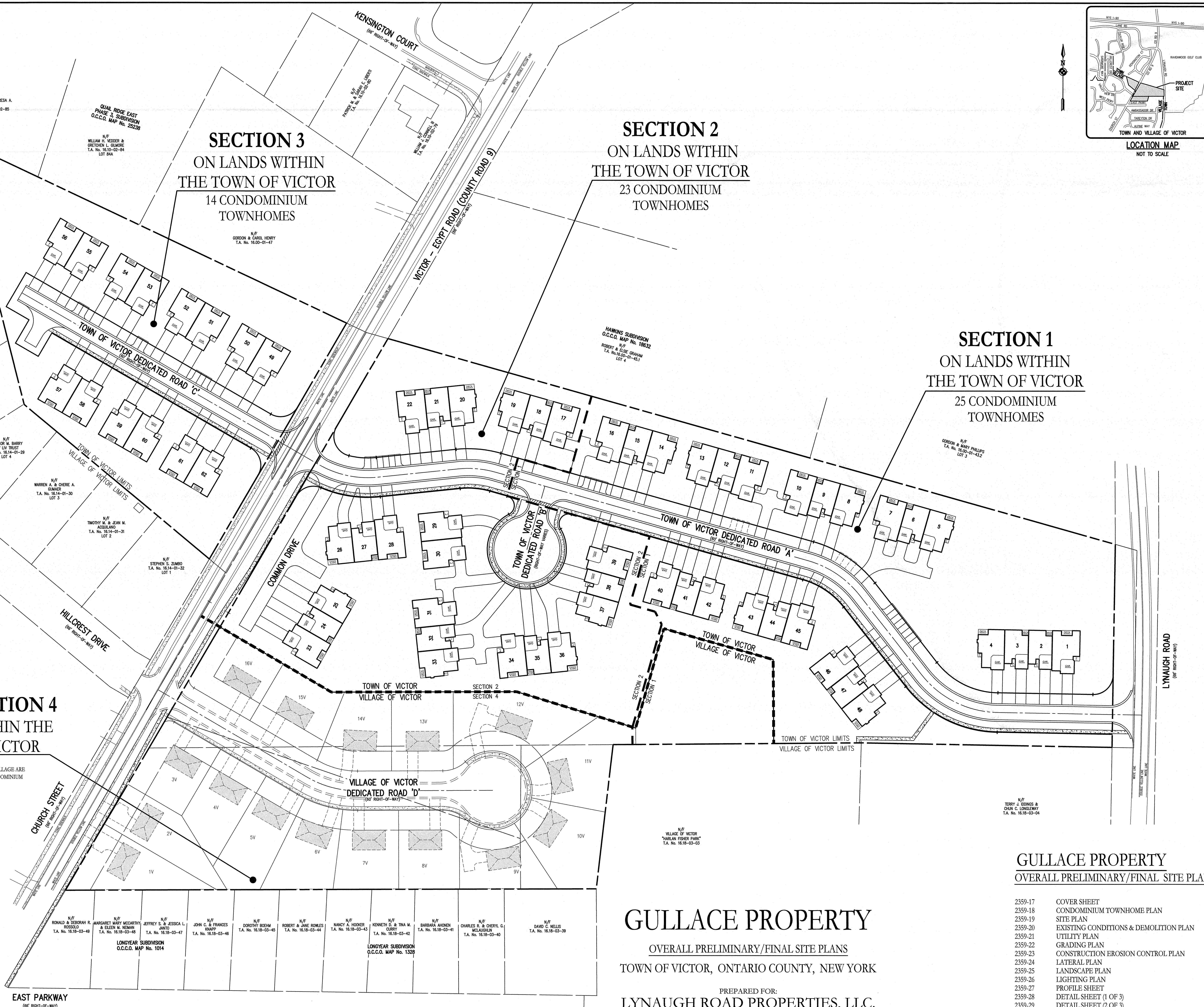


SECTION 3
ON LANDS WITHIN
THE TOWN OF VICTOR
14 CONDOMINIUM
TOWNHOMES

SECTION 2
ON LANDS WITHIN
THE TOWN OF VICTOR
23 CONDOMINIUM
TOWNHOMES

SECTION 1
ON LANDS WITHIN
THE TOWN OF VICTOR
25 CONDOMINIUM
TOWNHOMES

FUTURE SECTION 4
ON LANDS WITHIN THE
VILLAGE OF VICTOR
16 SINGLE FAMILY LOTS
NOTE: PORTION OF LANDS WITHIN THE VILLAGE ARE
NOT PART OF THE TOWN OF VICTOR CONDOMINIUM
TOWNHOUSE PROPOSAL



GULLACE PROPERTY

OVERALL PRELIMINARY/FINAL SITE PLANS
TOWN OF VICTOR, ONTARIO COUNTY, NEW YORK

PREPARED FOR:
LYNAUGH ROAD PROPERTIES, LLC.
160 DESPATCH DRIVE
EAST ROCHESTER, NY 14445

GULLACE PROPERTY
OVERALL PRELIMINARY/FINAL SITE PLANS

- | | |
|---------|---------------------------------------|
| 2359-17 | COVER SHEET |
| 2359-18 | CONDOMINIUM TOWNHOME PLAN |
| 2359-19 | SITE PLAN |
| 2359-20 | EXISTING CONDITIONS & DEMOLITION PLAN |
| 2359-21 | UTILITY PLAN |
| 2359-22 | GRADING PLAN |
| 2359-23 | CONSTRUCTION EROSION CONTROL PLAN |
| 2359-24 | LATERAL PLAN |
| 2359-25 | LANDSCAPE PLAN |
| 2359-26 | LIGHTING PLAN |
| 2359-27 | PROFILE SHEET |
| 2359-28 | DETAIL SHEET (1 OF 3) |
| 2359-29 | DETAIL SHEET (2 OF 3) |
| 2359-30 | DETAIL SHEET (3 OF 3) |